

H1081104U211

ROUGH 40.19 CT



6.95 CT G SI1 - 5.02 CT G VVS2

0.52 CT E VVS1 - PEAR 1.00 CT E VVS1



Colorless Manufacturing Report

Rough Weight: 40.19Cts

H1081108U211

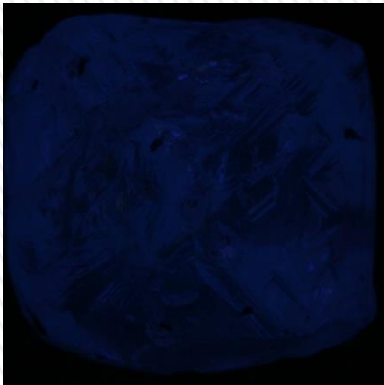
Rough Images: Judge II



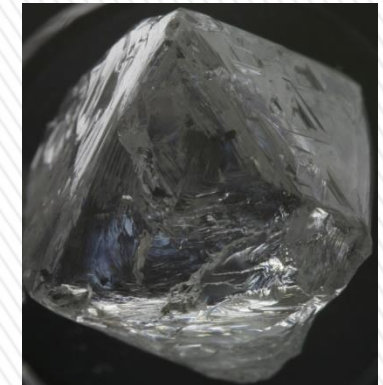
DIB:



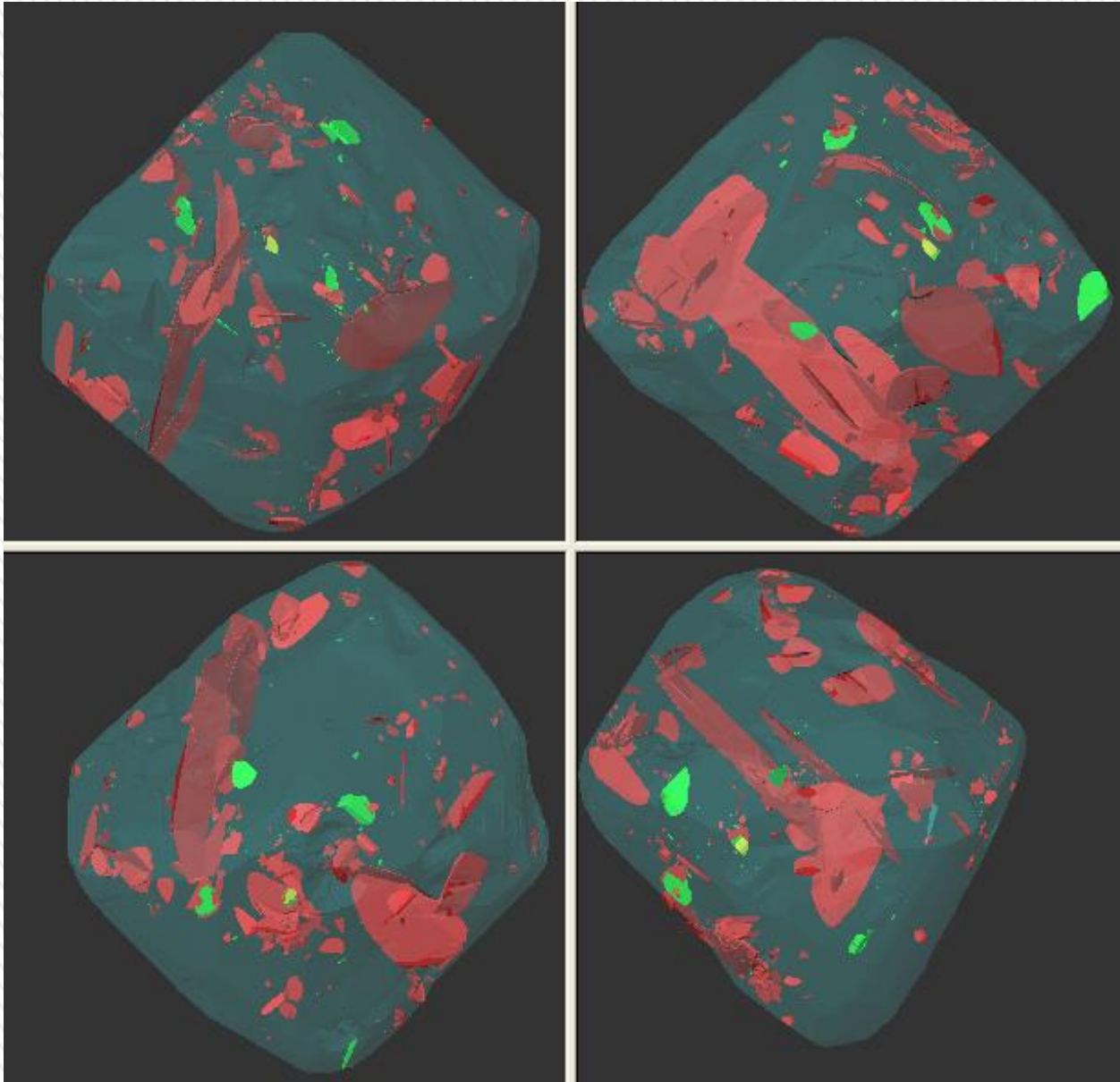
UV:



STRESS:



Inclusion Plotting:



Basic Planning:

Oxygen - [u211]












File Edit View Inclusion Window Settings Help

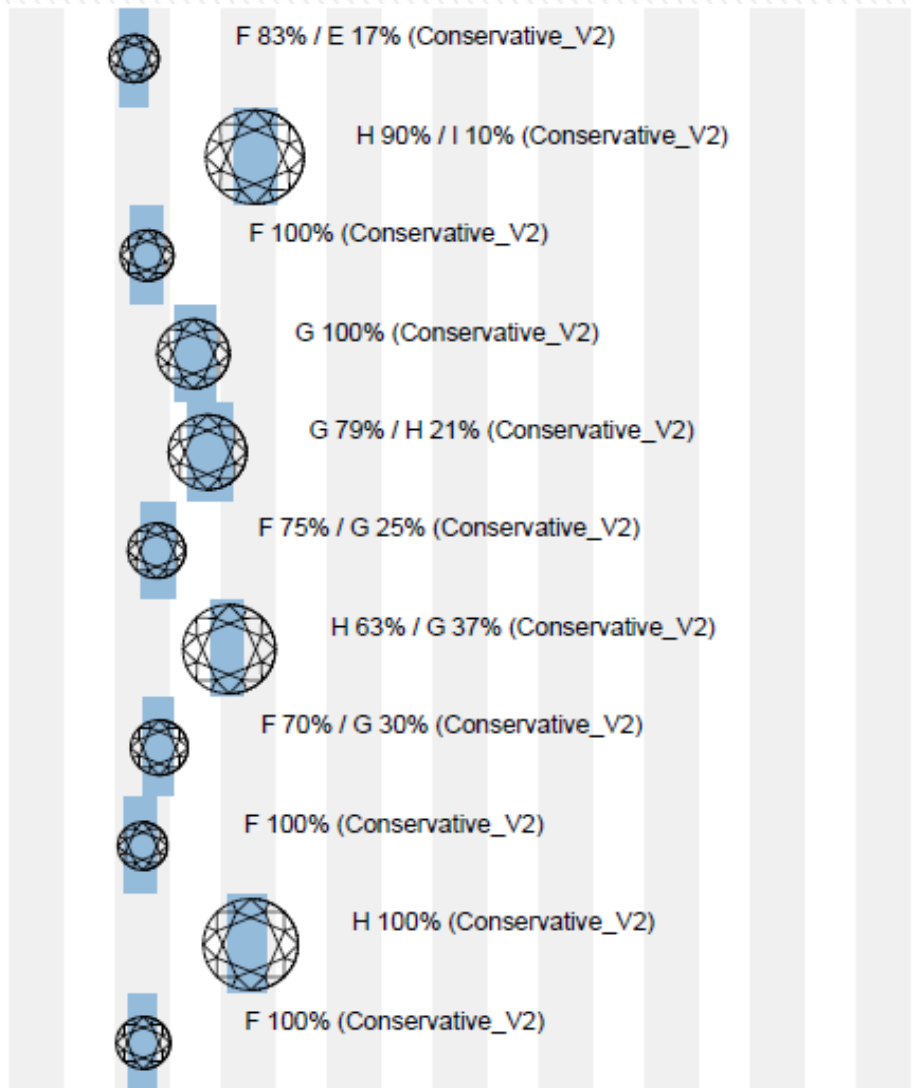
CAVITIES INCLUSIONS ALLOCATE DIAMONDS INCLUSIONS INPOLISHED PHOTOREAL C1 custom C2 custom ORIGINAL

Tree

- Model 1 38.18 ct
 - Scan
 - Inclusions
 - Solutions
 - Loaded solutions
 - #44 BBPB 1°: 13.49(+0.00)
 - Brill 1: 6.95 ct (146211 \$)
 - Brill 2: 5.02 ct (212723 \$)
 - Pear_wBT.P24C32 1: 1
 - Brill 3: 0.52 ct (2129 \$)
 - Layer 1 1
 - Layer 2 1
 - Layer 3 1

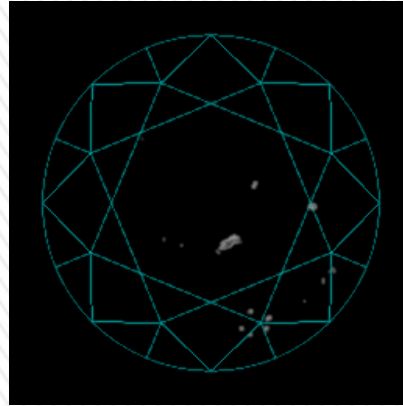


4.3		Brilliant	1.29 ct	VS2	\$7837	
5.1		Brilliant	10.28 ct	SI2	\$227445	\$240580
5.2		Brilliant	1.57 ct	VS2	\$13135	
6.1		Brilliant	4.00 ct	VS2	\$95400	\$251879
6.2		Brilliant	4.99 ct	VS1	\$145583	
6.3		Brilliant	1.99 ct	SI2	\$10895	
7.1		Brilliant	8.38 ct	VS2	\$209165	\$235452
7.2		Brilliant	2.00 ct	SI1	\$18450	
7.3		Brilliant	1.29 ct	VS2	\$7837	
8.1		Brilliant	9.43 ct	VS2	\$215457	\$232777
8.2		Brilliant	1.66 ct	SI2	\$8816	

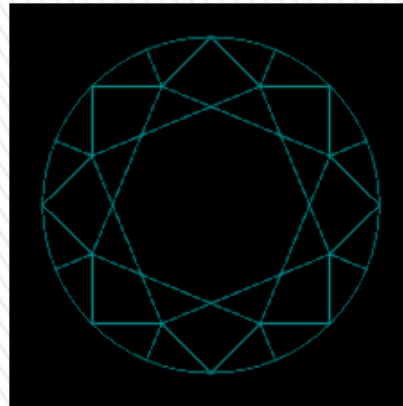
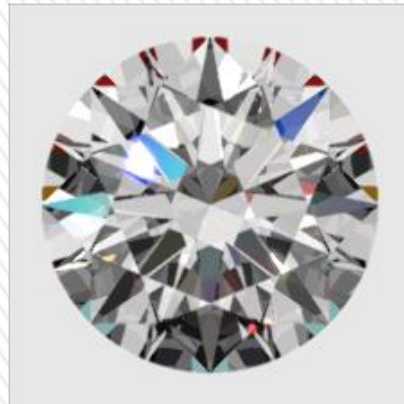


Final Solution for Manufacturing :

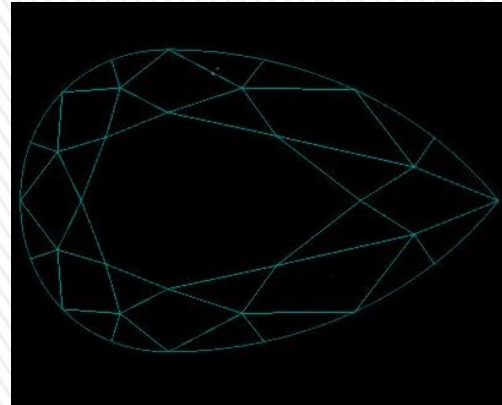
Brilliant 6.95Ct H 60% G 40% SI1 EX



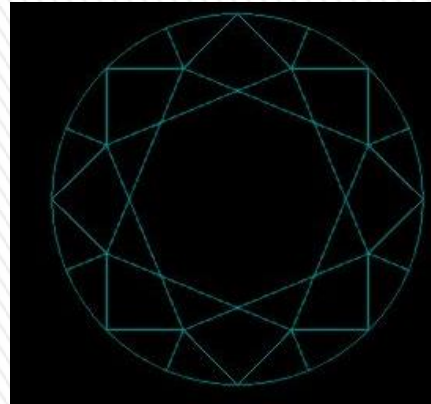
Brilliant 5.02Ct G VVS2 EX



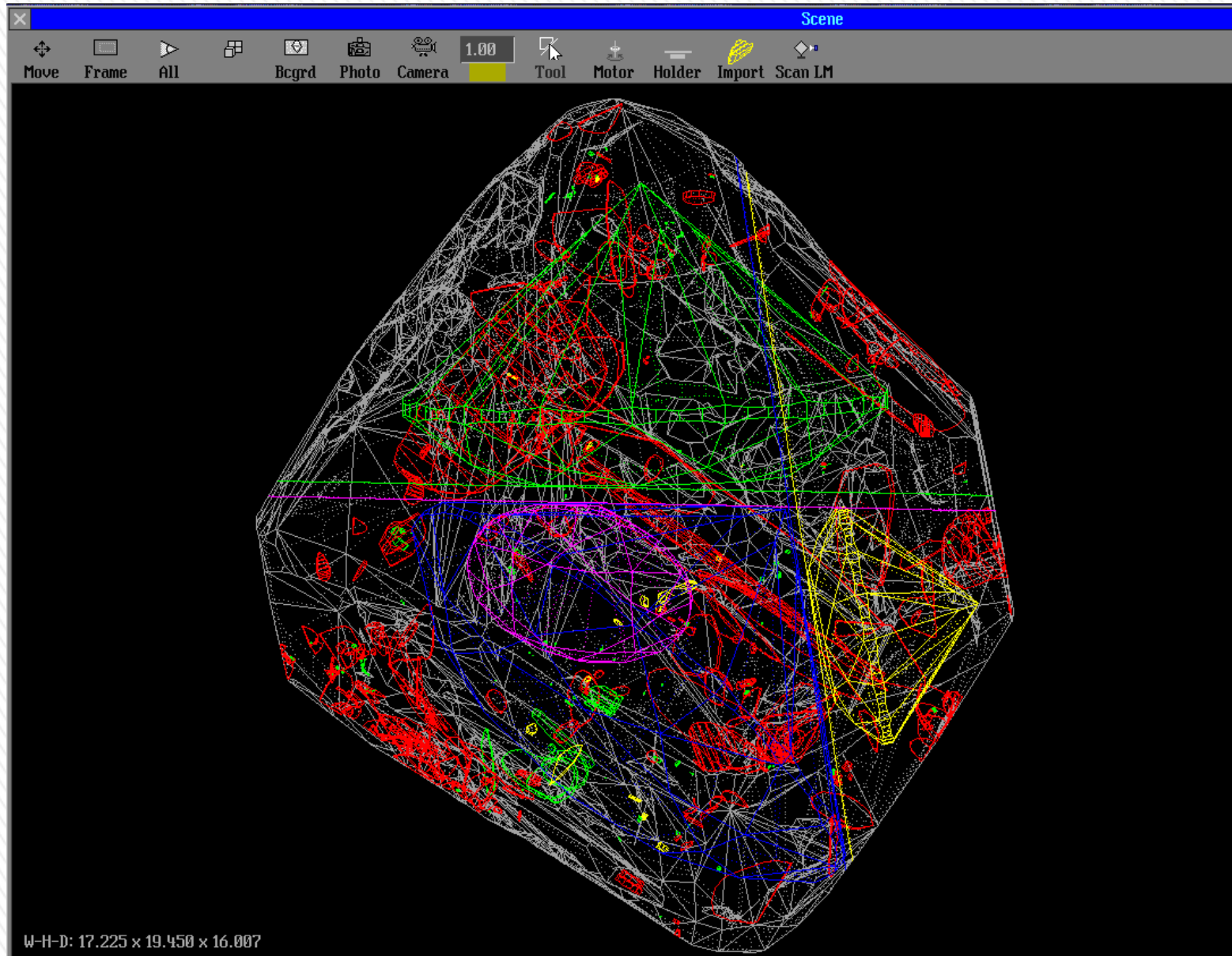
Pear_wBT.P24C32 1.00 Ct E VVS1



Brilliant 0.52 Ct E VVS1 EX



Sawing:



After Sawing Color Estimation File: 6.95Cts. _G _SI1_ EX

Solution No.	Cutting	Weight	Clarity	Value	Total Value	Color (GIA)																											
						D	E	F	G	H	I	J	K	L	M	N	O-P	Q-R	S-T	U-V	W-X	Y-Z											
1.1		Brilliant	6.91 ct	SI1	\$119294	\$301897																											
							H 60% / G 40% (Conservative_V2)																										

Blocking Judge II Images:



Blocking DIB Images:



Polished Judge II Images:



Polished DIB Images:

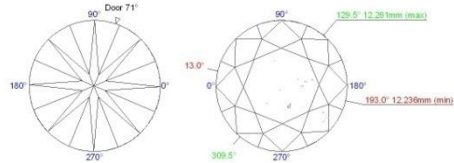
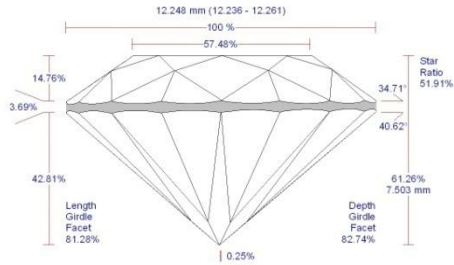


IS Capture Images:



LTM DIAMOND REPORT

Client's Name	
Stone No	H1081104J211
Report Date	10.10.2011
Real weight, ct	6.944
Measurements, mm	12.248 (12.236 - 12.261) x 7.503



GRADE



SYMMETRY	Excellent
POLISH	Excellent
CUT	Excellent

REMARKS:

This document is not a warranty, guarantee or appraisal of value. This certificate is provided upon specific request from the owner of the diamond, for his own use. LTM cannot be held responsible for any claim whatsoever which may be made on the basis of this certificate. It only contains the characteristics of the diamond after it has been cut graded and analyzed at LTM with the help of Helium & its allied software including Diamcalc, standardized viewing environment and a few proprietary instruments/software. Diamond profile diagram is an accurate 3D Model of the real diamond and the photos are real images captured using RPS under specific lighting condition. This certificate can be reproduced with prior written permission from LTM.



After Sawing Color Estimation File: 5.02Cts._G_VVS2_EX

Solution No.	Cutting	Weight	Clarity	Value	Total Value	Color (GIA)																										
						D	E	F	G	H	I	J	K	L	M	N	O-P	Q-R	S-T	U-V	W-X	Y-Z										
1.1		Brilliant	5.01 ct	VS1	\$112408	\$112408	 G77% / F 23% (Conservative_V2)																									

Blocking Judge II Images:



Blocking DIB Images:



Polished Judge II Images:



Polished DIB Images:

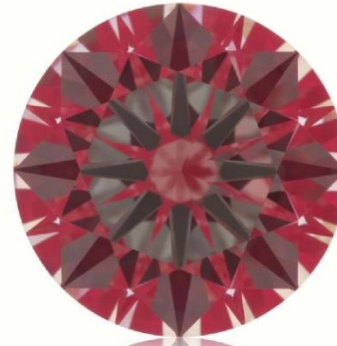
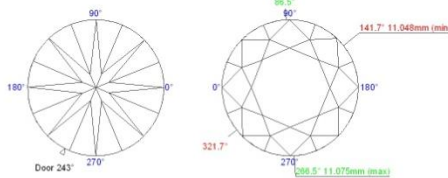
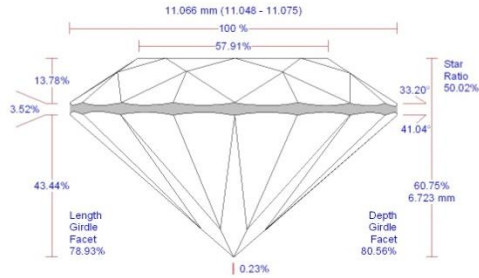


IS Capture Images:



LTM DIAMOND REPORT

Client's Name	
Stone No	H1081104U211-A
Report Date	18.10.2011
Real weight, ct	5.020
Measurements, mm	11.066 (11.048 -11.075) x 6.723



GRADE

SYMMETRY	Excellent
POLISH	Excellent
CUT	Excellent

REMARKS:

This document is not a warranty, guarantee or appraisal of value. This certificate is provided upon specific request from the owner of the diamond, for his own use. LTM cannot be held responsible for any claim whatsoever which may be made on the basis of this certificate. It only contains the characteristics of the diamond after it has been cut graded and analyzed at LTM with the help of Helium & its allied software including Diamcalc, standardized viewing environment and a few proprietary instruments /software. Diamond profile diagram is an accurate 3D Model of the real diamond and the photos are real images captured using RPS under specific lighting condition. This certificate can be reproduced with prior written permission from LTM.



After Sawing Color Estimation File: 1.00Cts. _E_VVS1

Solution No.	Cutting	Weight	Clarity	Value	Total Value	Color (GIA)																										
						D	E	F	G	H	I	J	K	L	M	N	O	P	Q	R	S	T	U	V	W	X	Y	Z				
1.1	Pear_wBT.P24C32	1.00ct	VS1	\$2772	\$2772		F 51% / E 49% (Conservative_V2)																									

Blocking Judge II Images:



Blocking DIB Images:



Polished Judge II Images:



Polished DIB Images:

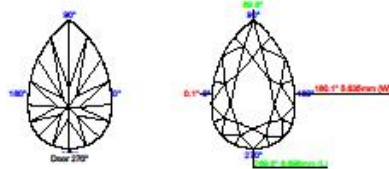
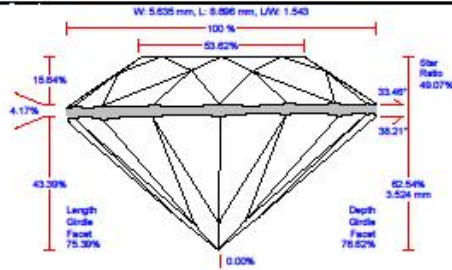


IS Capture Images:



LTM DIAMOND REPORT

Client's Name	
Stone No	H1061104U211-8
Report Date	10.10.2011
Real weight, ct	1.004
Measurements, mm	7.358 (5.635 - 8.696) x 3.524



GRADE


SYMMETRY	Very Good
POLISH	Excellent
CUT	-

REMARKS:

This document is not a warranty, guarantee or appraisal of value. This certificate is provided upon specific request from the owner of the diamond, for his own use. LTM cannot be held responsible for any claim whatsoever which may be made on the basis of this certificate. It only contains the characteristics of the diamond after it has been cut graded and analyzed at LTM with the help of Hellum & its allied software including Diamcalc, standardized viewing environment and a few proprietary instruments/software. Diamond profile diagram is an accurate 3D Model of the real diamond and the photos are real images captured using RPS under specific lighting condition. This certificate can be reproduced with prior written permission from LTM.



After Sawing Color Estimation File: 0.52Cts. _E_VVS1_EX

Solution No.	Cutting	Weight	Clarity	Value	Total Value	Color (GIA)
1.1		Brilliant	0.52 ct	VSI		E 77% / D 23% (Conservative_V2)

Blocking Judge II Images:



Blocking DIB Images:



Polished Judge II Images:



Polished DIB Images:

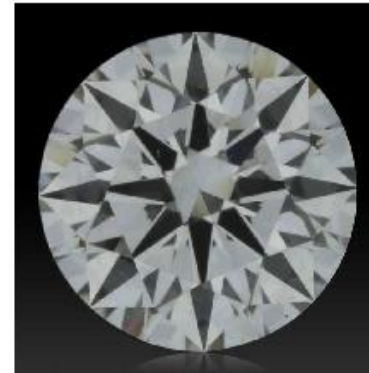
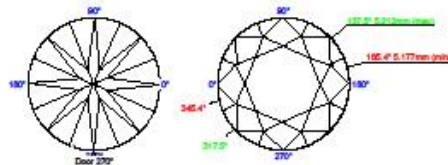
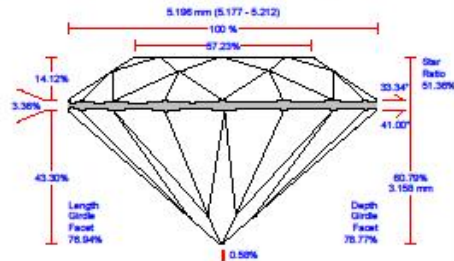


IS Capture Images:



LTM DIAMOND REPORT

Client's Name	
Stone No	H1081104U211-C
Report Date	15.10.2011
Real weight, ct	0.522
Measurements, mm	5.196 (5.177 - 5.212) x 3.158



GRADE

SYMMETRY	Excellent
POLISH	Excellent
CUT	Excellent

REMARKS:

This document is not a warranty, guarantee or appraisal of value. This certificate is provided upon specific request from the owner of the diamond, for his own use. LTM cannot be held responsible for any claim whatsoever which may be made on the basis of this certificate. It only contains the characteristics of the diamond after it has been cut graded and analyzed at LTM with the help of Heilmann & its allied software including Diamcalc, standardized viewing environment and a few proprietary instruments/software. Diamond profile diagram is an accurate 3D Model of the real diamond and the photos are real images captured using RPS under specific lighting condition. This certificate can be reproduced with prior written permission from LTM.

