

G2090915Z312

ROUGH 0.76 CT



FANCY VIVID BLUE 0.37 CT SI2



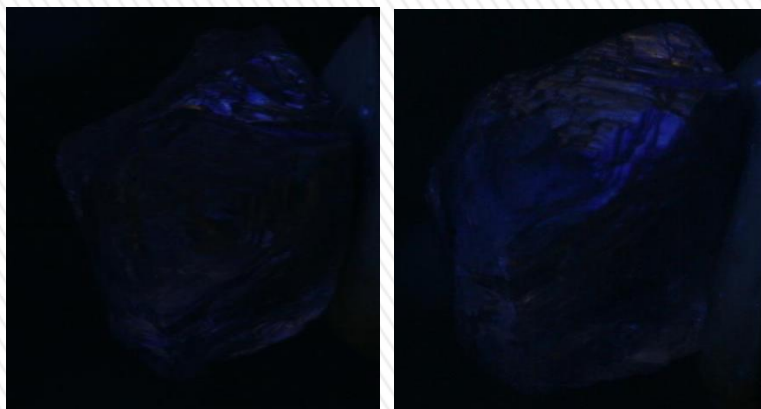
Rough Images from DIB0806



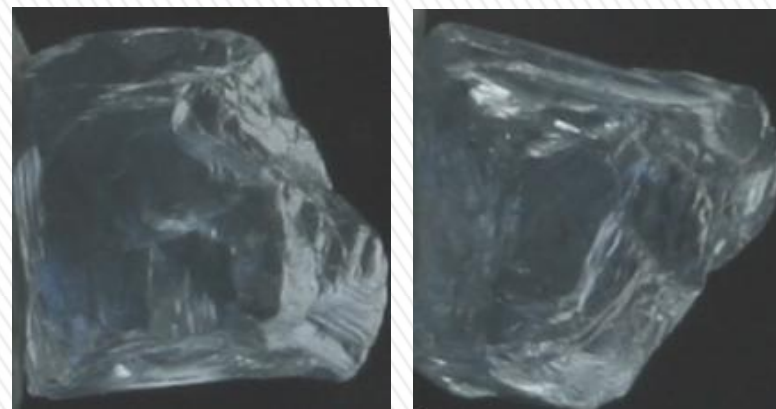
Judge II



UV



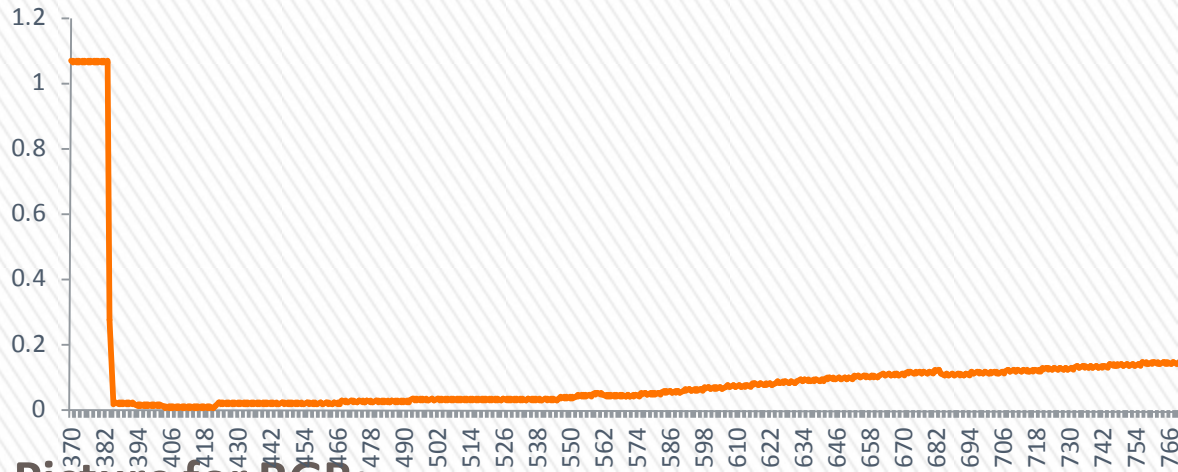
Stress



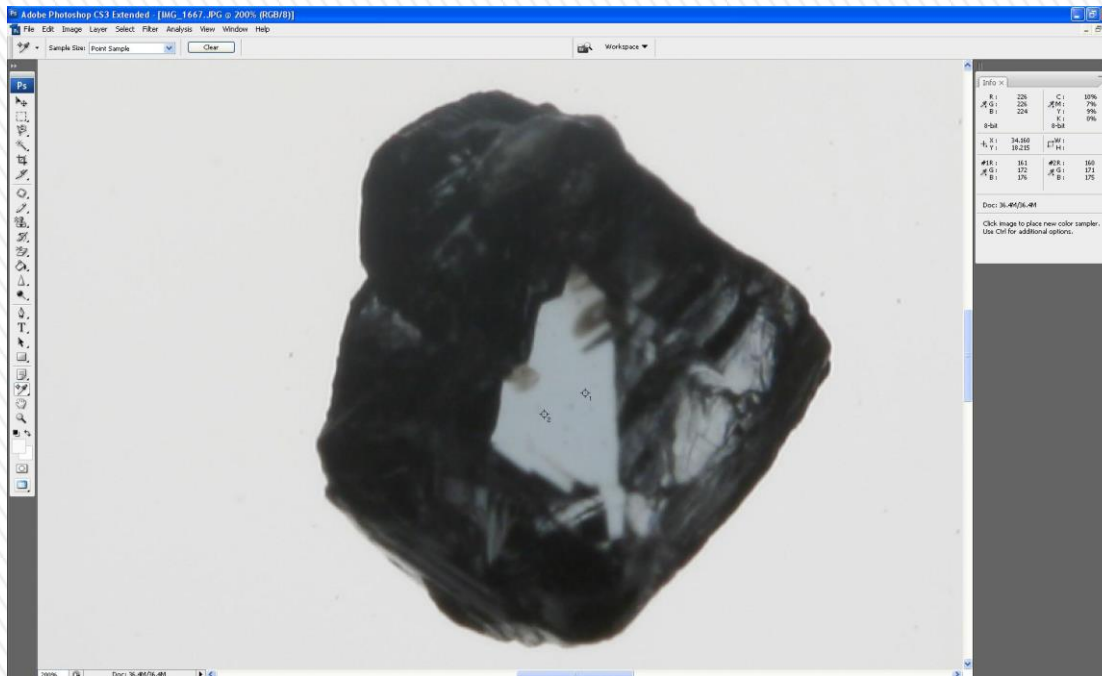
Fancy Color Optimization Report
G2090915Z312



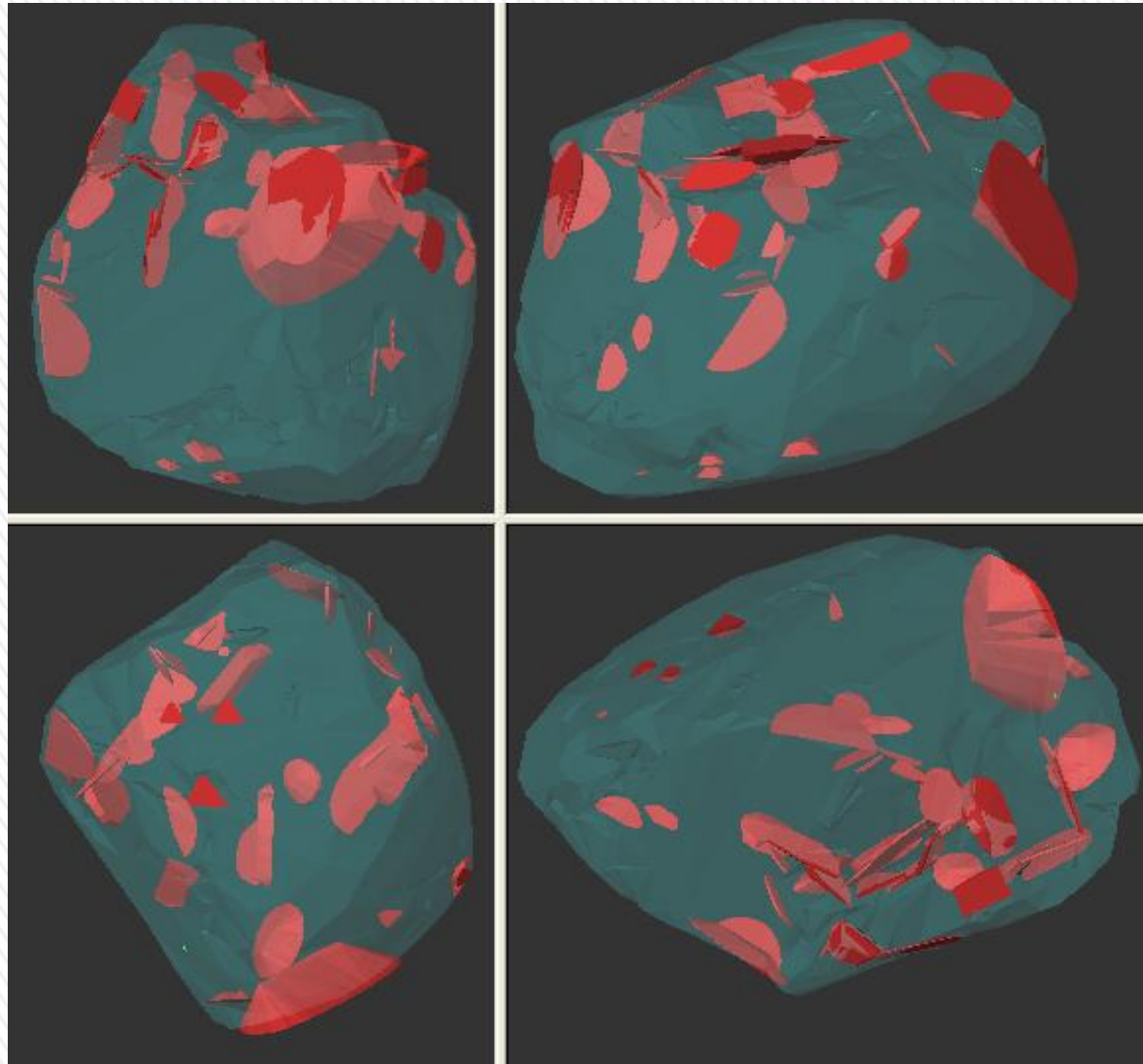
Absorption Spectrum



Picture for RGB:

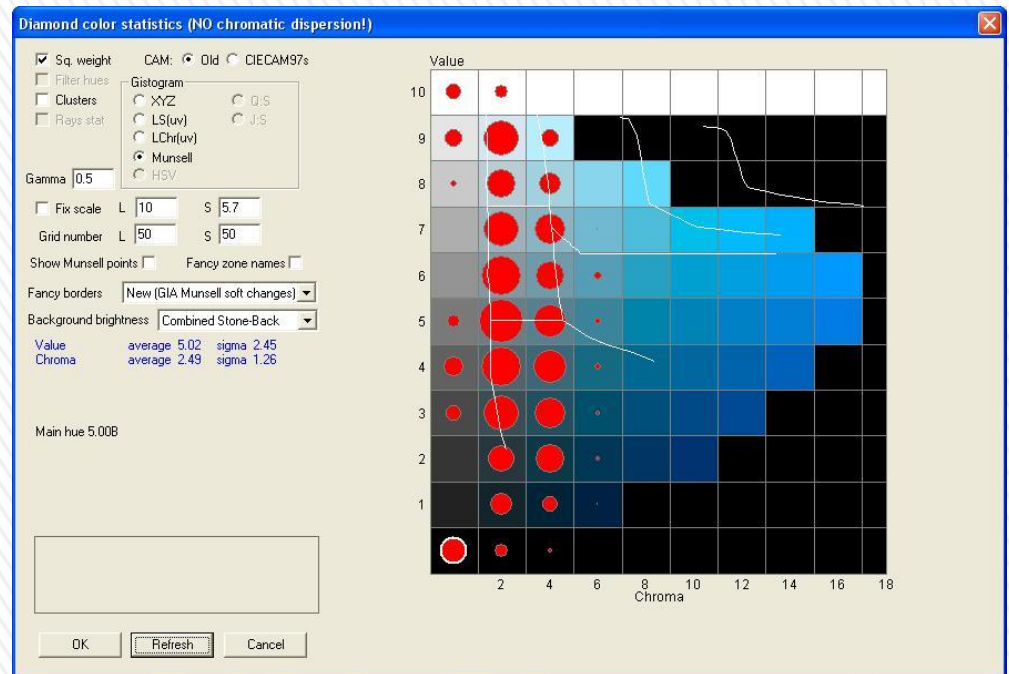


Inclusion Plotting

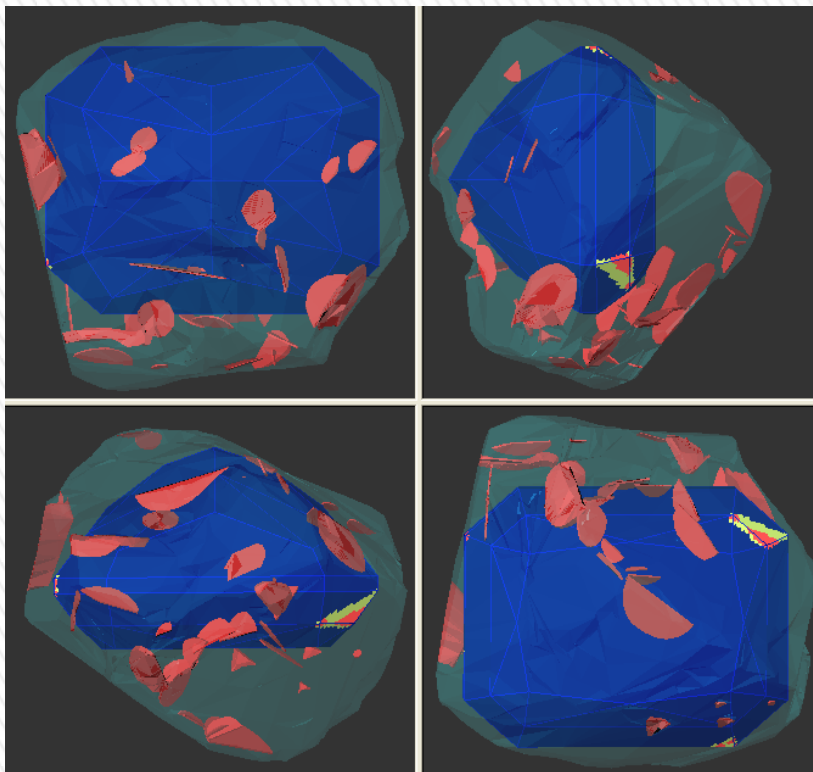


Optimized Modified Radiant: 0.35 Ct.

Munsell Color Statistics:



Allocation:



Polish With Inclusion:



Actual Pictures of the Diamond under Various Lighting Conditions:

Judge II



DIB0806



Office Light :



Munsell Color Match



GIA Certificate



GIA
GEMOLOGICAL INSTITUTE OF AMERICA®

5355 Armada Drive | Carlsbad, CA 92008-4602
T: 760-603-4500 | F: 760-603-1814

GIA Laboratories
Bangkok Carlsbad Gaborone
Johannesburg Mumbai New York
www.gia.edu

COLORED DIAMOND GRADING REPORT

GIA REPORT 2115480193

December 11, 2009
Shape and Cutting Style **Cut-Cornered
Rectangular Modified Brilliant**
Measurements 4.15 x 3.31 x 2.74 mm

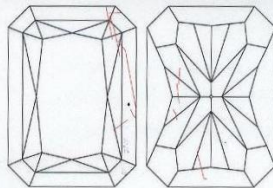
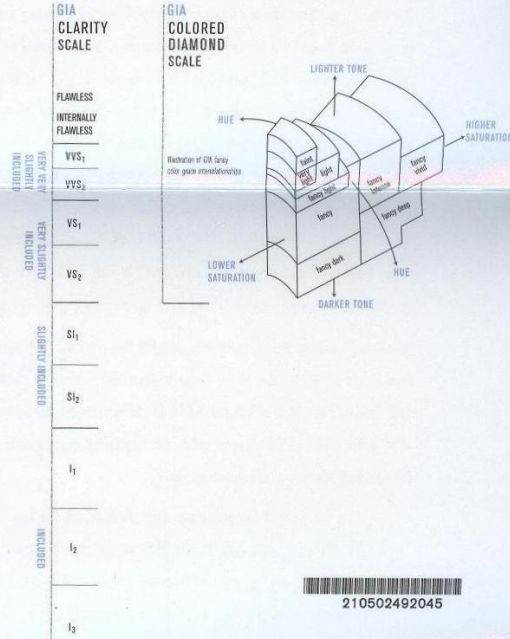
GRADING RESULTS

Carat Weight **0.35 carat**
Color
Origin **NATURAL**
Grade **FANCY VIVID
BLUE**
Distribution **Even**
Clarity Grade **I1**

ADDITIONAL GRADING INFORMATION

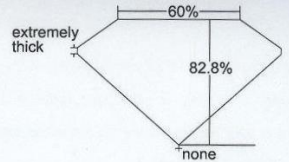
Finish
Polish **Excellent**
Symmetry **Very Good**
Fluorescence **None**
Comments:
None

REFERENCE DIAGRAMS



KEY TO SYMBOLS

Feather



Profile not to actual proportions

This Report is not a guarantee, valuation or appraisal and contains only the characteristics of the diamond described herein after it has been graded, tested, examined and analyzed by the laboratory providing this Report ("GIA") and/or has been inspected using the techniques and equipment used by GIA at the time of the examination and/or inspection. Inscriptions reported in this document are not a guarantee, validation, or warranty of a diamond's quality, country of origin or source, or that the diamond will be identifiable by the inscription in the future (since inscriptions can be removed). GIA makes no representation concerning any trademark, word, or symbol which is inscribed by GIA or which is identified on this Report. The recipient of this Report may wish to consult a credentialed jeweler or gemologist about the information contained herein.

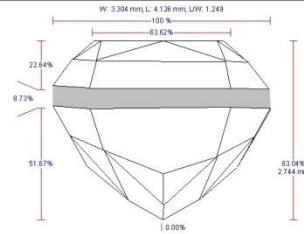


IMPORTANT LIMITATIONS ON BACK

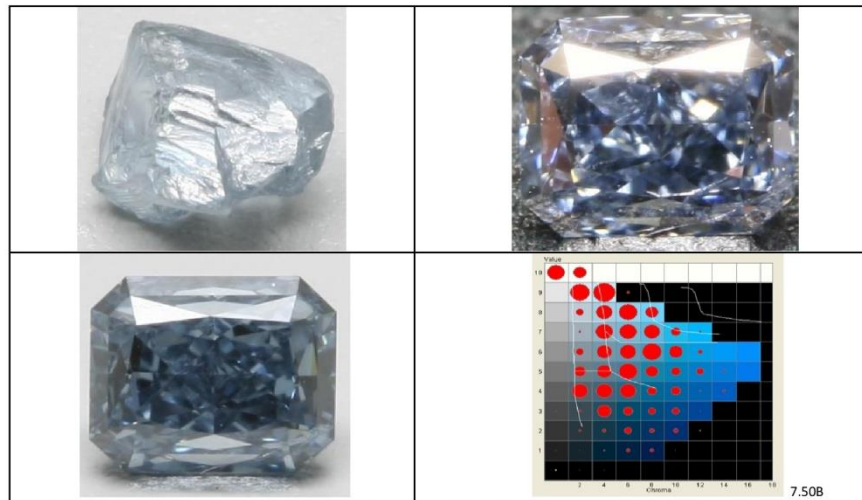
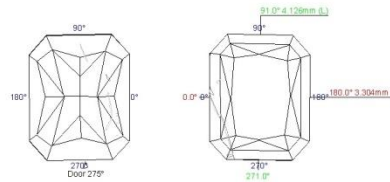
©2008 GEMOLOGICAL INSTITUTE OF AMERICA, INC.

DIAMOND REPORT

Client's Name	
Stone No	G2090915Z312
Report Date	24.11.2009
Real weight, ct	0.356
Measurements, mm	4.276 (3.304 -4.662) x 2.744



GRADE	
SYMMETRY	Very Good
POLISH	Excellent
COLOR DISTRIBUTION	Even



This document is not a warranty, guarantee or appraisal of value. This certificate is provided upon specific request from the owner of the diamond, for his own use. LTM cannot be held responsible for any claim whatsoever which may be made on the basis of this certificate. It only contains the characteristics of the diamond after it has been cut graded and analyzed at LTM with the help of Helium & its allied software including Diamcalc, standardized viewing environment and a few proprietary instruments /software. Diamond profile diagram is an accurate 3D Model of the real diamond and the photos are real images captured using RPS under specific lighting condition. This certificate can be reproduced with prior written permission from LTM.